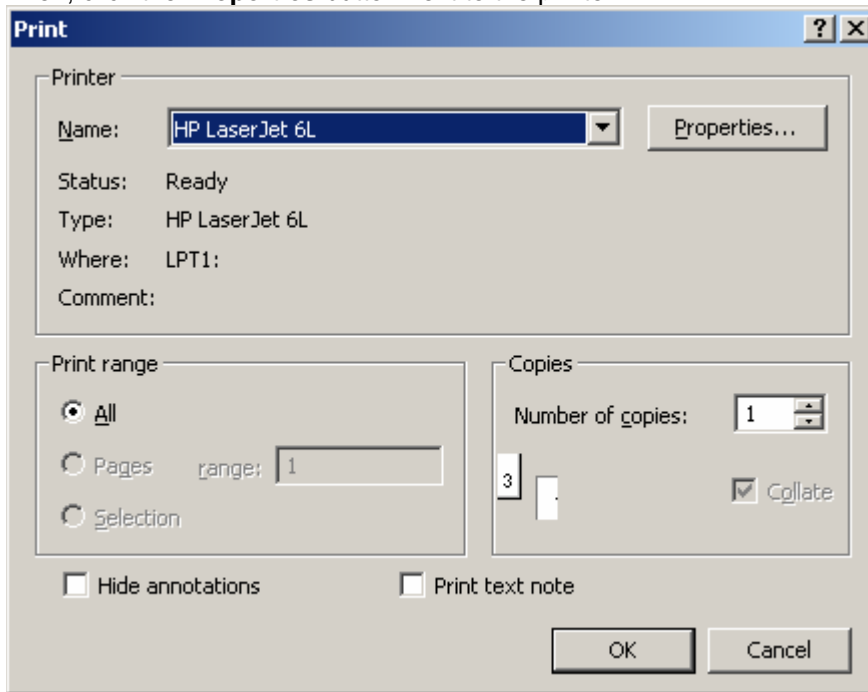
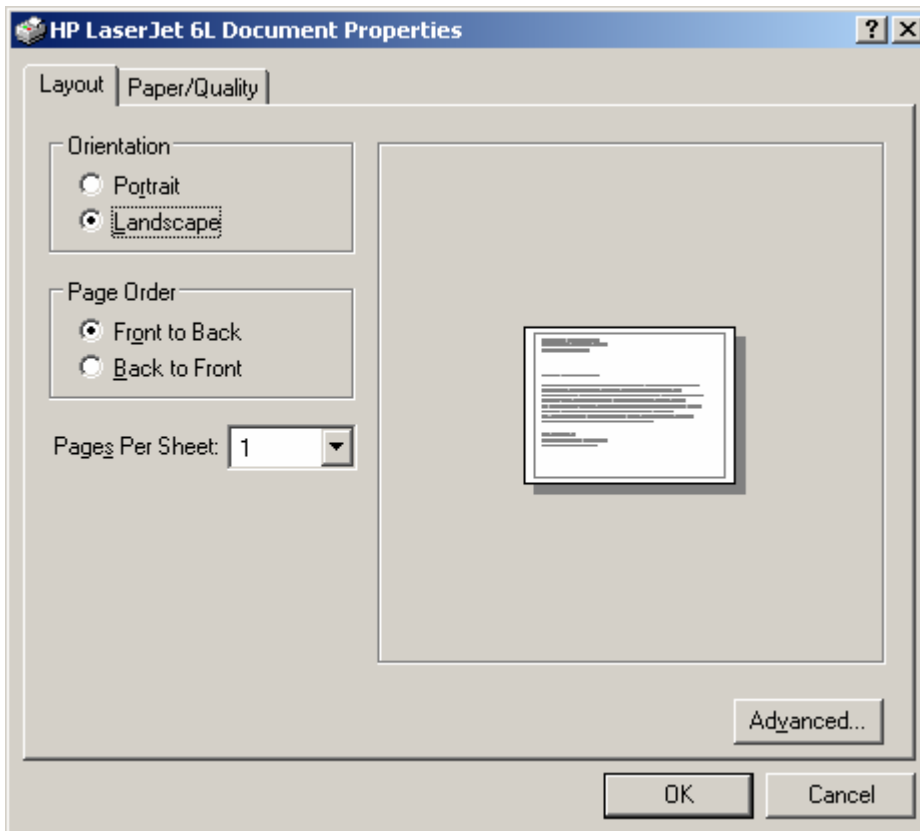


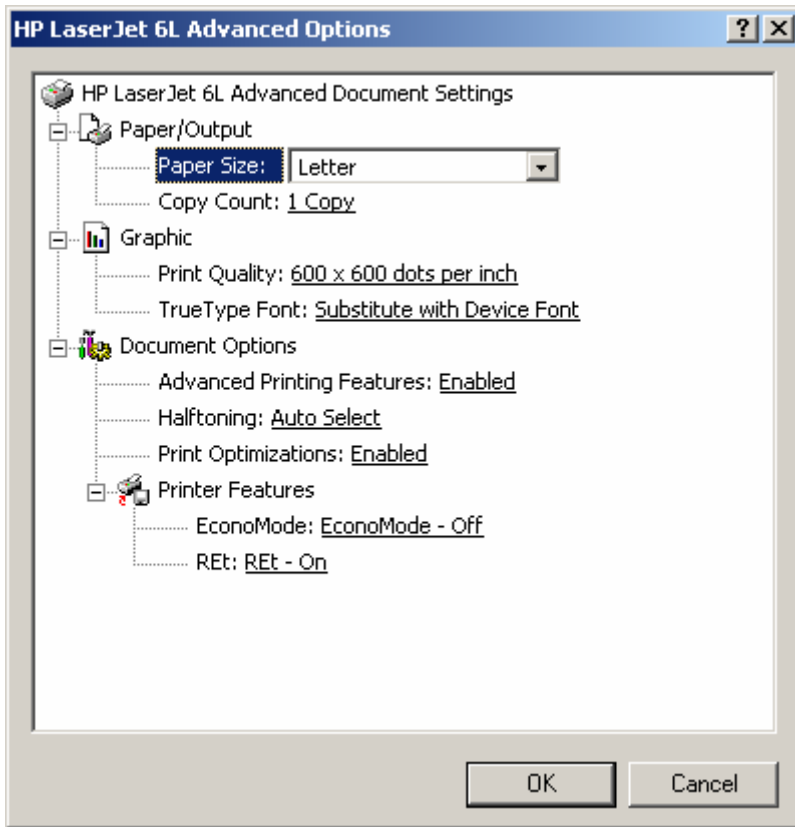
Then, click the **Properties** button next to the printer.



Make sure the **Orientation** on the **Layout** Tab has **Landscape** selected.

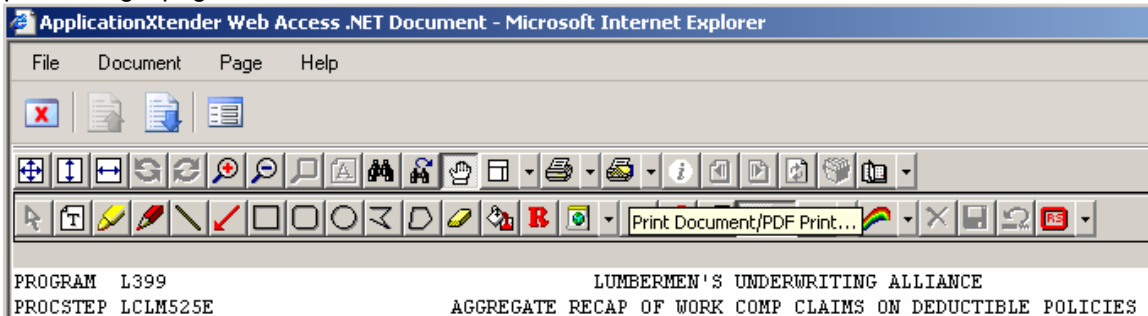


Finally, select the **Advanced** button, and confirm the settings there. Keep in mind, some of these settings might not reflect every printer. This is just an example of my printer settings, but the settings should come close.



Click on the drop down arrow next to the printer icons applicable to your situation and select **Print**.

The printer icon with the hand will print an entire document, while the printer icon by itself will just print a single page.



You will again be prompted with the same printer prompt boxes shown above.

If this doesn't resolve your printing problem, please verify that your configuration is set up to handle overlays. For help with this, see the FAQ (Problems: Q2), "Why doesn't the overlay display on my report documents?"