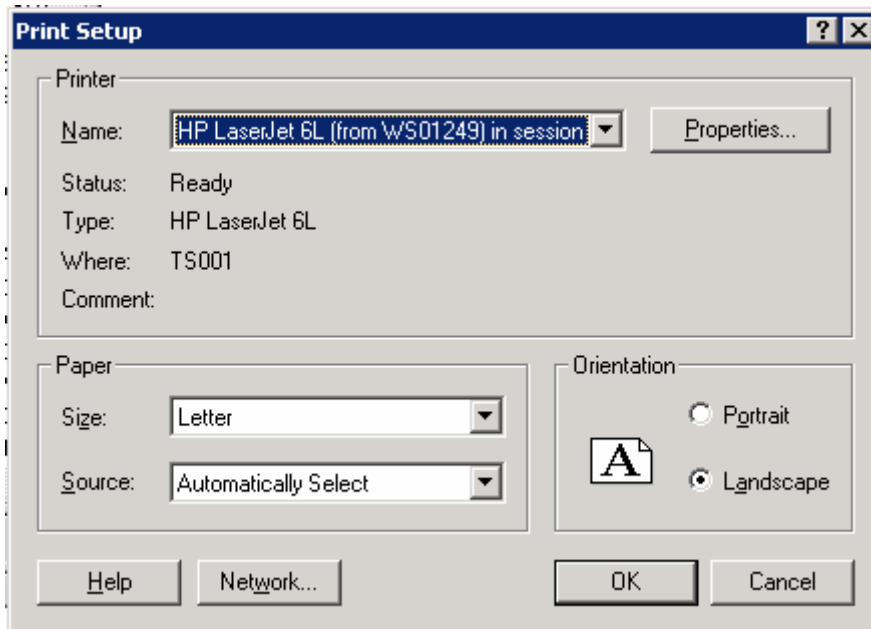
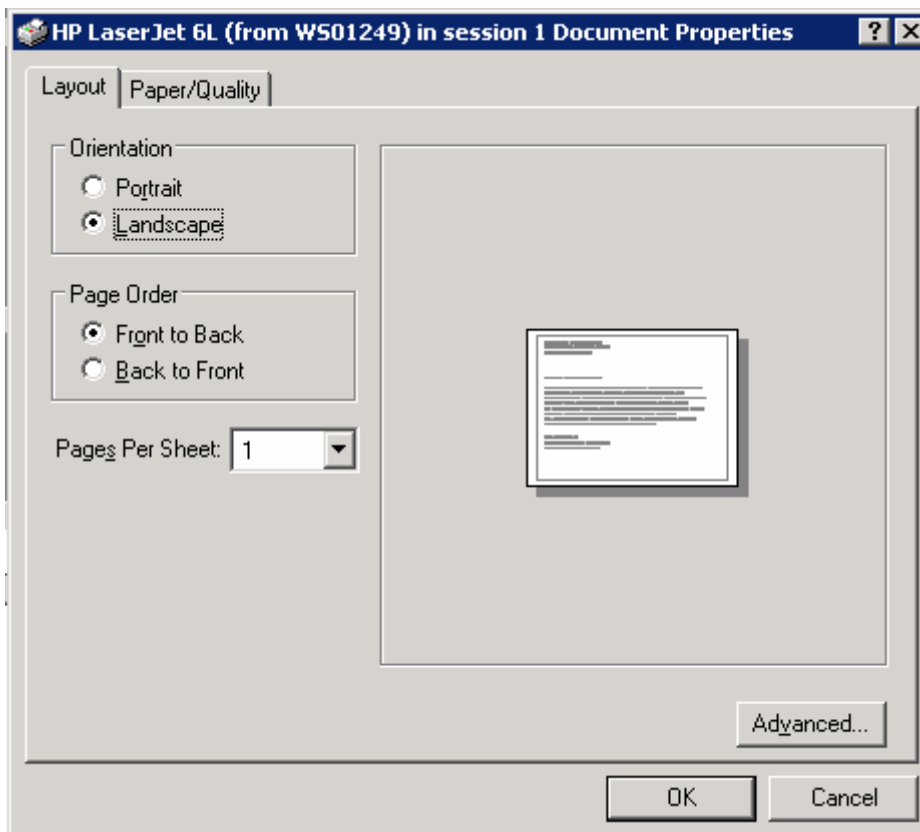


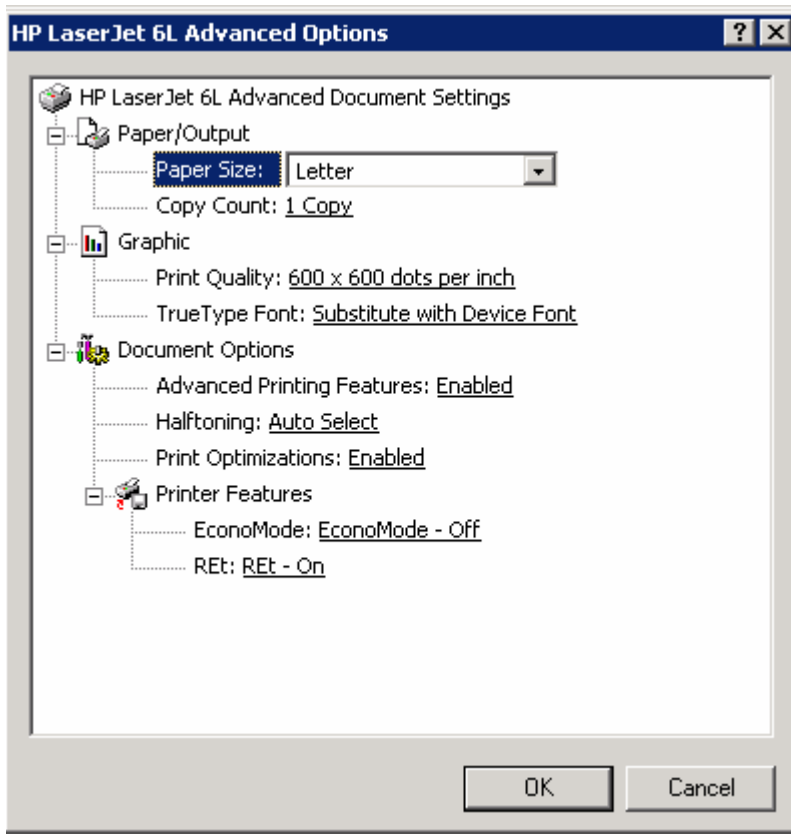
AX Desktop Clients or AX Media Viewer Users need to go to the **File Menu** and select **Print Setup**. Confirm that the section for **Orientation** is set on Landscape.



In addition, select the **Properties** button located at the upper right hand corner and confirm that **Orientation** on the **Layout** tab is set to **Landscape**:



Finally, select the **Advanced** button, and confirm the settings there. Keep in mind, some of these settings might not reflect every printer. This is just an example of my printer settings, but the settings should come close.



If this doesn't resolve your printing problem, please verify that your configuration is set up to handle overlays. For help with this, see the FAQ (Problems: Q2), "Why doesn't the overlay display on my report documents?"